

## Physical and Chemical Analysis Data Form

### Waterwatch Melbourne Physical and Chemical Analysis

#### Monitoring site details

Site code:

Site description:

Riddells Creek at Riddells Creek

Name of monitoring group

Persons monitoring:

Karl Jesser

Date and time of monitoring:

9th February 2019

1100hrs.

Please record your data below:

Parameter	Reading	Comments
Air Temperature	16 °C	
Water Temperature	19.1 °C	
Turbidity	14 NTU	
pH	7.8 Unit	
Conductivity	1170 µS / cm	
Dissolved Oxygen	>10 mg / L	% Saturation
Phosphate <small>(If using Lamotte Smart2 Colorimeter multiply by 0.326 to calculate mg/L)</small>	0.03 mg / L	
Ammonium	0 mg / L	
Nitrate	N/A mg / L	

#### Observations and Notes:

What has changed since last time you monitored?

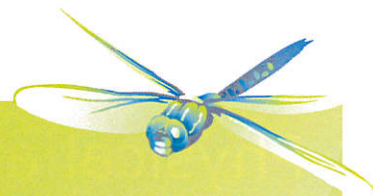
What stands out about the site today?

Turbidity raised slightly since last test.

Other observations:

People swimming in deeper waterholes

Some light scummy appearance



## Physical and Chemical Analysis Data Form

### Waterway Information

#### Rate of flow:

- Very fast     Fast     Normal base flow     Slow     Trickle  
 None     Permanent     Temporary     Other

If 'Other', please specify:

#### Type of flow:

- Rising     Steady     Falling     Peak     Dry     Pools / Puddles     Other

If 'Other', please specify:

#### Waterway Appearance:

- Clear     Muddy     Smelly     Frothy     Scummy  
 Oily     Discoloured     Milky     Stained brown     Other

If 'Other', please specify:

*Only slight scummy appearance*

Waterway depth: 0-50 cm (0 to 3000cm)

Waterway width: 2-5 dm (0 to 100m)

#### Weather:

- Sunny     Cloudy     Overcast     Showers     Rain  
 Hail     Windy     Foggy     Other

If 'Other', please specify:

*Total rainfall for January 2019 11.4mm.*

#### Last rainfall:

- Raining now     Last 24hrs     Last 3 days     Last 7 days     More than a week ago

#### Litter / Pollutants:

- Cans     Paper     Clothing     Oil (m<sup>2</sup>)  
 Food Packets     Plastic     Polystyrene     Car bodies  
 Waxed Cardboard     Bottles     Petrol/Diesel (m<sup>2</sup>)     Other

If 'Other', please specify: